

# KING KONG



1:5 SCALE 2WD/4WD GAS MONSTER TRUCK

Item NO. :FS10803/FS11803



## SPECIFICATION:

Length.....	820mm
Width.....	550mm
Height.....	400mm
Wheelbase (F/R).....	520mm
Tire Diameter.....	215*W91mm
Gear Ratio.....	11.3:1
Engine.....	23cc/26cc/30cc
Fuel capacity.....	700CC
N. W/G. W.....	12.9Kg/17.4Kg

[WWW.FS-RACINGART.COM](http://WWW.FS-RACINGART.COM)



## **BEFORE YOU RUN THE CAR**

### **About radio system**

You should understand the operation of your transmitter. Place 8 AA batteries in the transmitter, and insert another 4 AA batteries into the battery case. It is important that all the batteries are new.

Always check the condition of the battery case wires as well as the switch wires. A broken wire can cause a short circuit and lead to a loss of control.

Always turn on your transmitter first and off last. If you start your car before turning on your transmitter, you will lose control of the car and could cause damage to your car or cause an accident.

Test the following radio functions without the engine running:

1. Turn on the transmitter.
2. Turn on the car receiver battery pack switch. Both the steering and throttle servos should move to their respective neutral settings.
3. Turn the steering wheel on the transmitter left and right. The front wheels should turn left and right (when viewed from behind). Use the steering trim adjustment to set the neutral (wheels pointing straight ahead) setting on your car. If your servos are slow, check your batteries.
4. Pull the throttle trigger. The carburetor should open on the engine.
5. Push the throttle trigger open and forward. This will activate the brakes.
6. Use the throttle trim adjustment to set the neutral (carburetor closed, brakes starting to engage) setting on your car.
7. Hold the throttle open and roll the car on the ground. The car should roll freely. While it is still rolling, push on the brakes. The car should come to an immediate stop. If these steps do not produce these results refer to the linkage assembly setup in this manual.



## **CHECKLIST BEFORE RUNNING**

- Ensure all screws are securely tightened.
- Ensure all moving parts move without binding.
- Install an oiled air filter. Ensure it is clean and not clogged.
- Ensure the fuel line is leak proof, with no cracks. Ensure it is not clogged
- Ensure the muffler and exhaust are damage free.
- Ensure the radio batteries are new and ensure they are securely installed.
- Ensure servos and linkages move without binding.
- Ensure the area of operation is safe.
- Ensure no one is on your frequency.

## **MAINTENANCE OPERATING YOUR MODEL SAFELY**

1. Operate the model in open areas with no people around! Do not operate it on public roads or in places where children and people are present, or in residential districts and parks, or in doors or in confined areas. Non-observance may incur personal injury and property damage!
2. Always check the batteries in the transmitter and the battery pack for the receiver are good. When the batteries get weak, the transmission and reception of the radio decrease. You may lose control of your model when operating it under such conditions. This may lead to accidents.
3. Keep in mind that people around you might also be operating a radio control model! Never share the same frequency with somebody else at the same time! Signals will be mixed and you will lose control of your model. This may lead to an accident!
4. Always use approved ground frequencies!
5. When the model is behaving strangely...  
Immediately stop the model and check for the cause. As long as the problem is unclear, do not operate the car! This may lead to further trouble and an unforeseen accident!
6. Handle fuel outdoors only!
7. Do not put finger or any objects on rotating or moving parts! Parts rotate/move at high speeds, you may be seriously injured!
8. After using, do not touch equipment on the model such as the engine and tuned pipe, because they generate high temperatures!  
You may cause severe burns to yourself by touching them!
9. Use only glow fuel for this radio control model!



10. Fuel is highly flammable and explosive!

Never use fuel indoors or in places with open fire or heat sources. Keep out of children's reach! Shut the cap tightly! Do not dispose of empty fuel cans into a fire! There is danger of explosion.

11. Be careful handling fuel, in case of contact with eyes or skins, rinse immediately with water and seek medical help if necessary. Do not swallow fuel.

## TROUBLE SHOOTING

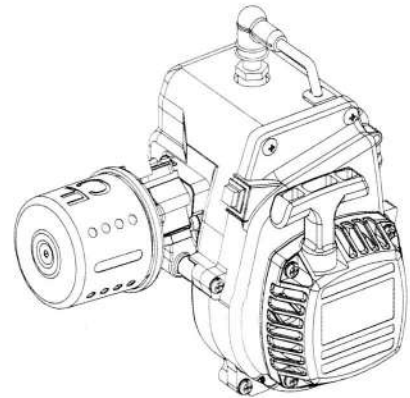
Problems	Reasons	Solution
Engine does not start	<ol style="list-style-type: none"> <li>1 No fuel in the fuel tank or in the carb.</li> <li>2 The glow plug damaged or not charged</li> <li>3 The fuel pipe the air filter, or the tuned pipe are clogged</li> <li>4 The engine is flooded</li> <li>5 The carburetor is not adjusted properly</li> <li>6 The servo linkage is not adjusted properly</li> </ol>	<ol style="list-style-type: none"> <li>1 Fill the fuel tank and press the prime button</li> <li>2 Replace the glow plug and /or charge the glow plug</li> <li>3 Clear or release the clogged parts</li> <li>4 Remove the glow plug, discharge fuel, test the glow plug. If broken, replace.</li> <li>5 Set idle and main/slow needle into the standard starting position</li> <li>6 Move the servo to neutral position and readjust it</li> </ol>
Engine can start but then stalls	<ol style="list-style-type: none"> <li>1 No fuel in the fuel tank</li> <li>2 The fuel pipe, the air filter, or the tuned pipe are clogged</li> <li>3 The carburetor is not adjusted properly</li> <li>4 The engine is overheated</li> </ol>	<ol style="list-style-type: none"> <li>1 Fill fuel tank and prime engine</li> <li>2 Clean or replace the clogged parts</li> <li>3 Readjust the idle and main/slow needle to the standard starting position</li> <li>4 Let the engine cool down thoroughly, and then restart</li> </ol>
The car does not run well	<ol style="list-style-type: none"> <li>1 The carburetor is not adjusted properly</li> <li>2 Oil pressure in the tuned pipe is low</li> <li>3 Check the transmission system</li> </ol>	<ol style="list-style-type: none"> <li>1 Readjust the idle and main/slow needle adjusting screw</li> <li>2 The pipe between the tuned pipe and the fuel tank</li> <li>3 If broken ,replace</li> </ol>
Out of control	<ol style="list-style-type: none"> <li>1 The transmitter or the receiver is power off</li> <li>2 Bad signal reception</li> <li>3 The servo's link is not adjusted properly</li> </ol>	<ol style="list-style-type: none"> <li>1 Recharge or replace the batteries</li> <li>2 Extend the antenna of transmitter and the receiver to its full extent</li> <li>3 Move the servo to neutral position and readjust it</li> </ol>

## Start engine

Before starting engine please read the instruction carefully

### 1. Engine friction practice

- The engine friction practice, to be basic, it should burn and practice 1 to 2 cylinder fuel, then walk slow and burn 1 to 2 cylinder fuel, at the moment it could be work normal and performance good.
- Attention : Because the buggy is effected easily in external environment, after buggy working over 1-2hour, the air filter should be cleaned. This work should be always remembered to do, otherwise it may affect the engine performance and engine life.



### 2. Start the transmitter and the receiver

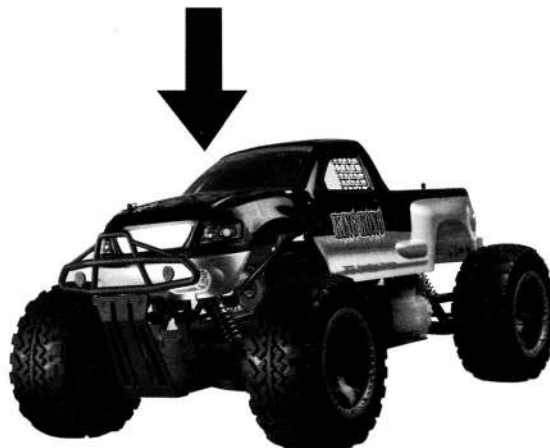
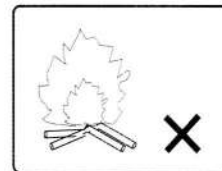
- 2.1 Pull the transmitter and receiver' s antenna, then turn on the transmitter and the receiver' s switch
- 2.2 Open the receiver' s switch, Be sure the carburetor is in idle position

### 3. Fill in fuel method

- 3.1 Use R/C model special fuel. Mix together Gasoline and highly lubricating oil (2T oil), the proportion is 25:1.
- 3.2 Finish filling fuel, tightly the fuel tank cover.

#### ● Attention

1. Don' t use the spirit of fuel or to contain burning aids ethyl alcohol, otherwise, carburetor rubber part and the engine can be damaged.
2. Gasoline is extremely flammable, strictly prohibit the smoke and fire.
- 3.3 For fear the fuel system appears unusually, be sure to keep the fuel strainer, fuel pipe and the appendix normal used.





10. Fuel is highly flammable and explosive!

Never use fuel indoors or in places with open fire or heat sources. Keep out of children's reach! Shut the cap tightly! Do not dispose of empty fuel cans into a fire! There is danger of explosion.

11. Be careful handling fuel, in case of contact with eyes or skins, rinse immediately with water and seek medical help if necessary. Do not swallow fuel.

## TROUBLE SHOOTING

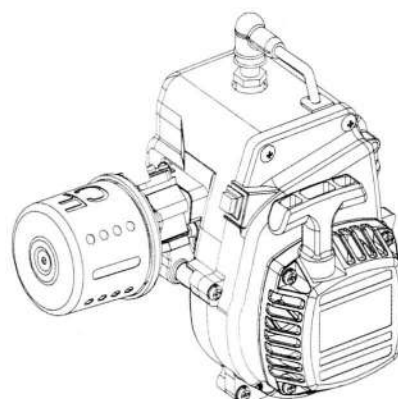
Problems	Reasons	Solution
Engine does not start	1 No fuel in the fuel tank or in the carb. 2 The glow plug damaged or not charged 3 The fuel pipe the air filter, or the tuned pipe are clogged 4 The engine is flooded 5 The carburetor is not adjusted properly 6 The servo linkage is not adjusted properly	1 Fill the fuel tank and press the prime button 2 Replace the glow plug and /or charge the glow plug 3 Clear or release the clogged parts 4 Remove the glow plug, discharge fuel, test the glow plug. If broken, replace. 5 Set idle and main/slow needle into the standard starting position 6 Move the servo to neutral position and readjust it
Engine can start but then stalls	1 No fuel in the fuel tank 2 The fuel pipe, the air filter, or the tuned pipe are clogged 3 The carburetor is not adjusted properly 4 The engine is overheated	1 Fill fuel tank and prime engine 2 Clean or replace the clogged parts 3 Readjust the idle and main/slow needle to the standard starting position 4 Let the engine cool down thoroughly, and then restart
The car does not run well	1 The carburetor is not adjusted properly 2 Oil pressure in the tuned pipe is low 3 Check the transmission system	1 Readjust the idle and main/slow needle adjusting screw 2 The pipe between the tuned pipe and the fuel tank 3 If broken ,replace
Out of control!	1 The transmitter or the receiver is power off 2 Bad signal reception 3 The servo's link is not adjusted properly	1 Recharge or replace the batteries 2 Extend the antenna of transmitter and the receiver to its full extent 3 Move the servo to neutral position and readjust it

## Start engine

Before starting engine please read the instruction carefully

### 1. Engine friction practice

- The engine friction practice, to be basic, it should burn and practice 1 to 2 cylinder fuel, then walk slow and burn 1 to 2 cylinder fuel, at the moment it could be work normal and performance good.
- Attention : Because the buggy is effected easily in external environment, after buggy working over 1-2hour, the air filter should be cleaned. This work should be always remembered to do, otherwise it may affect the engine performance and engine life.



### 2. Start the transmitter and the receiver

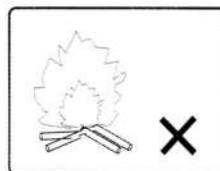
- 2.1 Pull the transmitter and receiver' s antenna, then turn on the transmitter and the receiver' s switch
- 2.2 Open the receiver' s switch, Be sure the carburetor is in idle position

### 3. Fill in fuel method

- 3.1 Use R/C model special fuel. Mix together Gasoline and highly lubricating oil (2T oil), the proportion is 25:1.
- 3.2 Finish filling fuel, tightly the fuel tank cover.

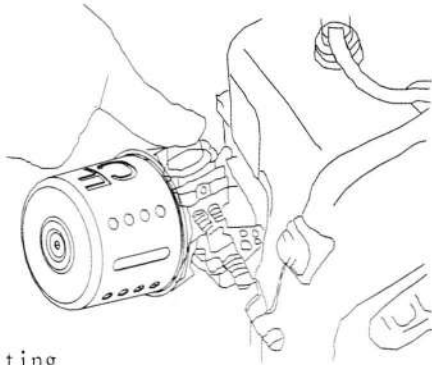
#### ● Attention

1. Don' t use the spirit of fuel or to contain burning aids ethyl alcohol, otherwise, carburetor rubber part and the engine can be damaged.
2. Gasoline is extremely flammable, strictly prohibit the smoke and fire.
- 3.3 For fear the fuel system appears unusually, be sure to keep the fuel strainer, fuel pipe and the appendix normal used.



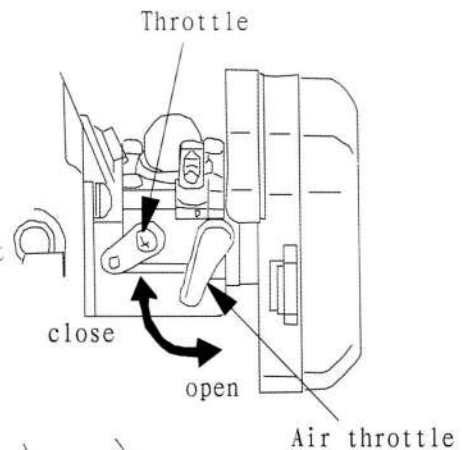
#### 4. Start Engine

- 4.1 Impetus front Valve several times until safely flow out oil.  
(Fig. 1)
- 4.2 Close the air throttle (Fig. 2), the open position and accelerator keep a 1/4-1/3 distance.
- 4.3 Rapidly pull the start handle, until the engine start work and sounds noisy. (Fig. 3)
- 4.4 Close the air throttle to 1/4 distance of opening position
- 4.5 Rapidly pull the start handle
- 4.6 After starting the engine several minutes preheating



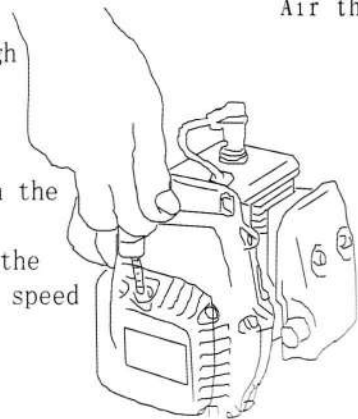
#### Main point:

1. When engine is over hot, blocked and lack of air is inevitable.
2. Block excessively, resulting to start difficultly. Then Causes the igniter plug to be moist.
3. When replace the igniter plug or dry the igniter plug, usually pull the start handle, remove the rest oil in the cylinder.



#### 5. Concrete operation

- 5.1 The engine has adjusted to high power and the high velocity condition, Needs correct maintenance to keep high performance.
- 5.2 The concrete operation is different because of the different player. It would be mentioned in the automobile manufacturer operating instructions.
- 5.3 After the valve full speed revolution, must let the engine be cold. Actually more than 30 seconds low speed idle operation.

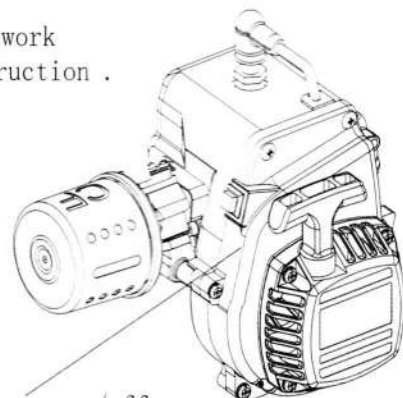


#### 6. Stop Engine

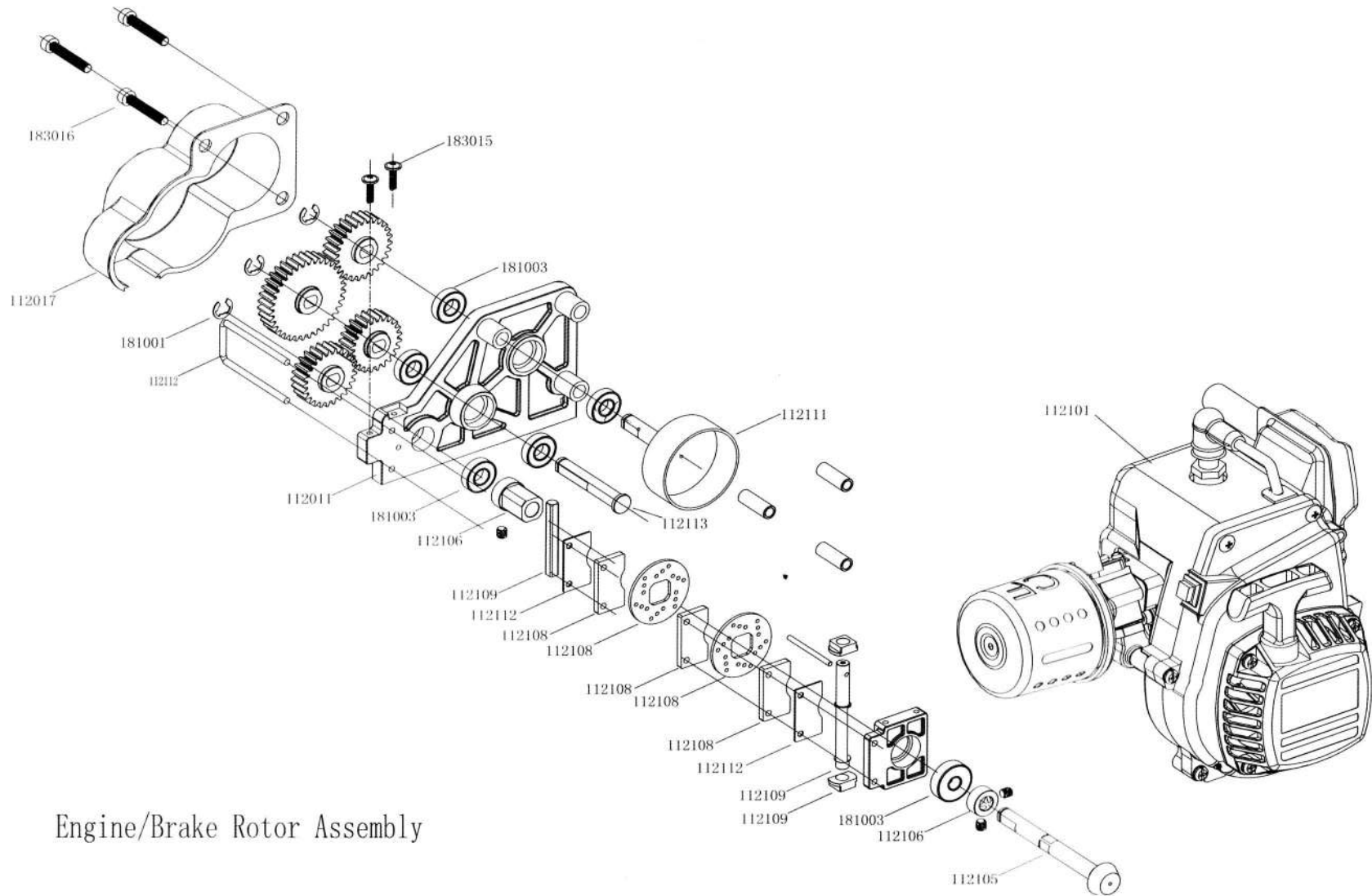
- Press down the engine flameout switch, engine stop work immediately. Detail please refer to the user's instruction.

#### 7. Attention maintenance

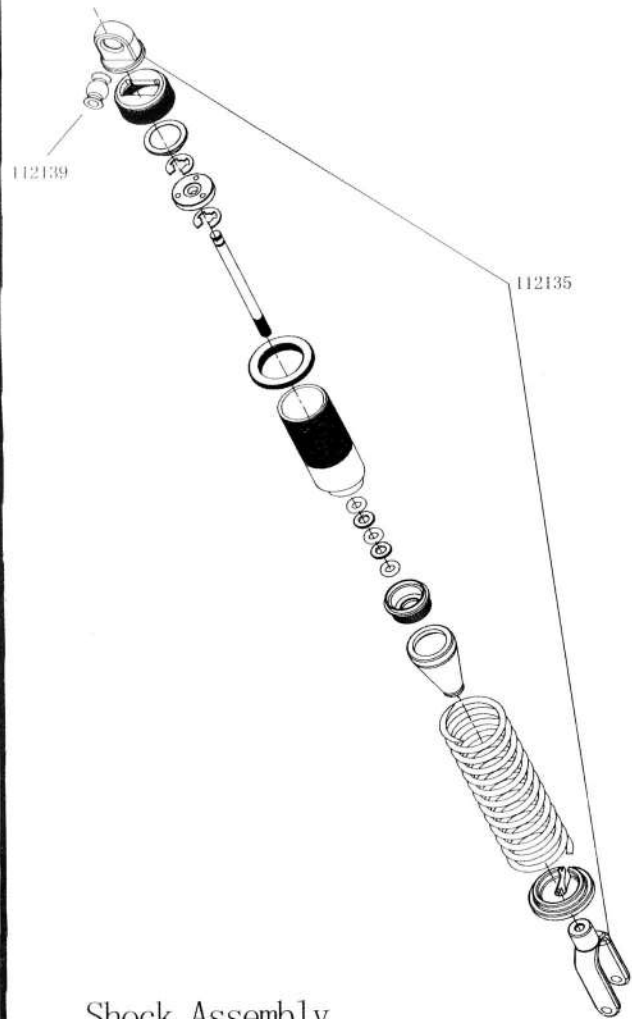
Keep the engine clean. Detail please refer to Instruction



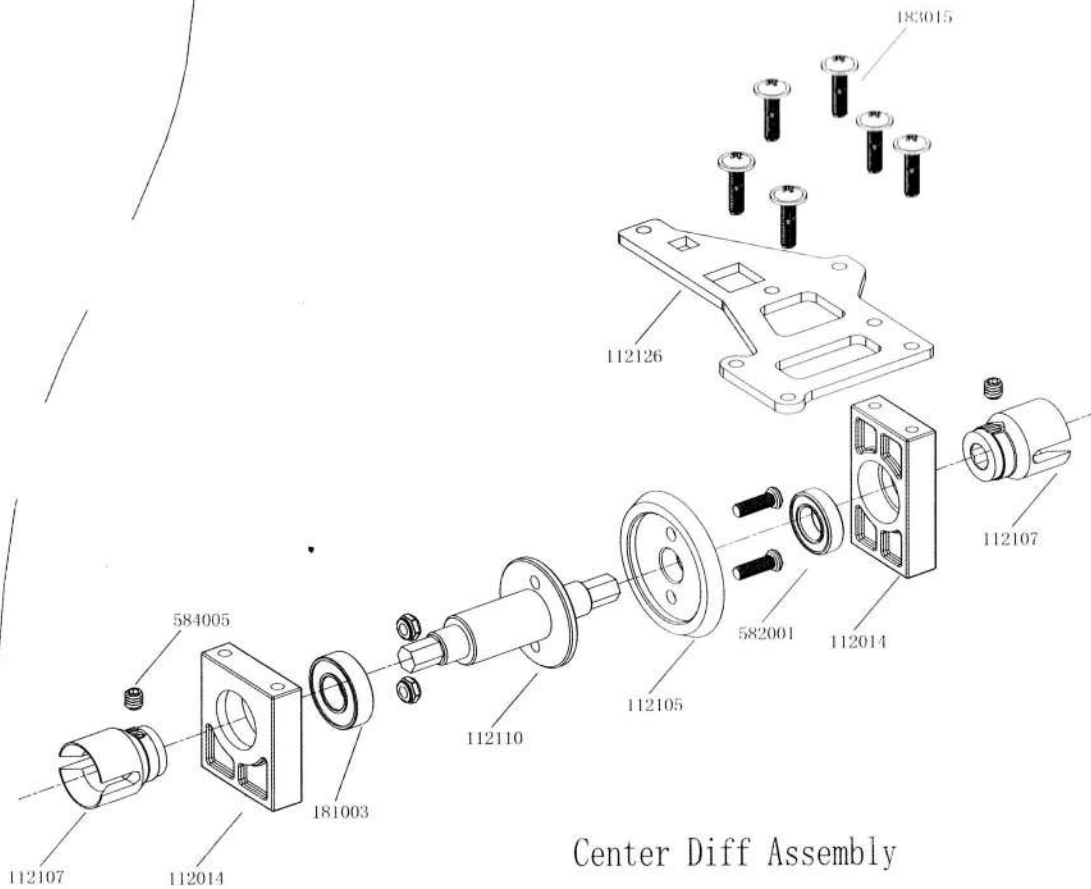




Engine/Brake Rotor Assembly

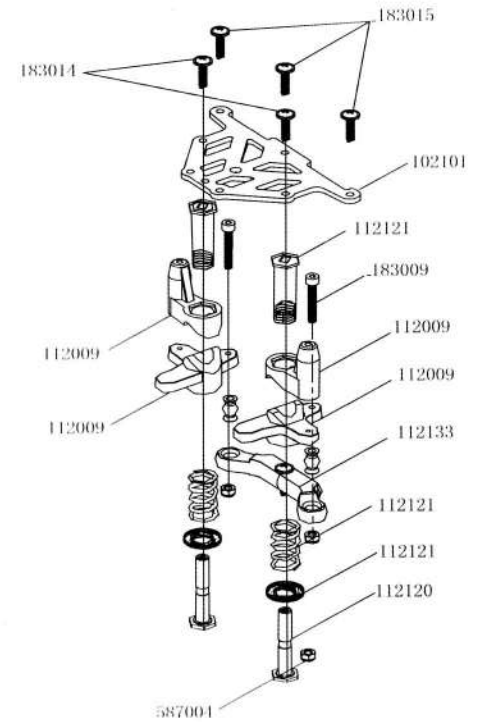
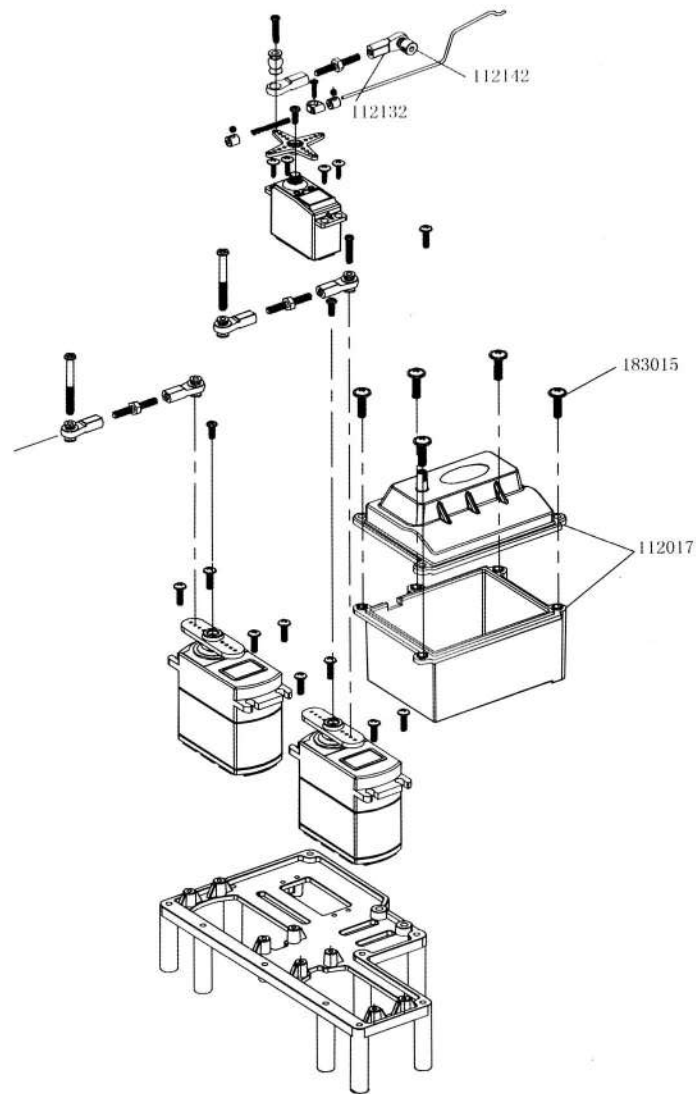


Shock Assembly

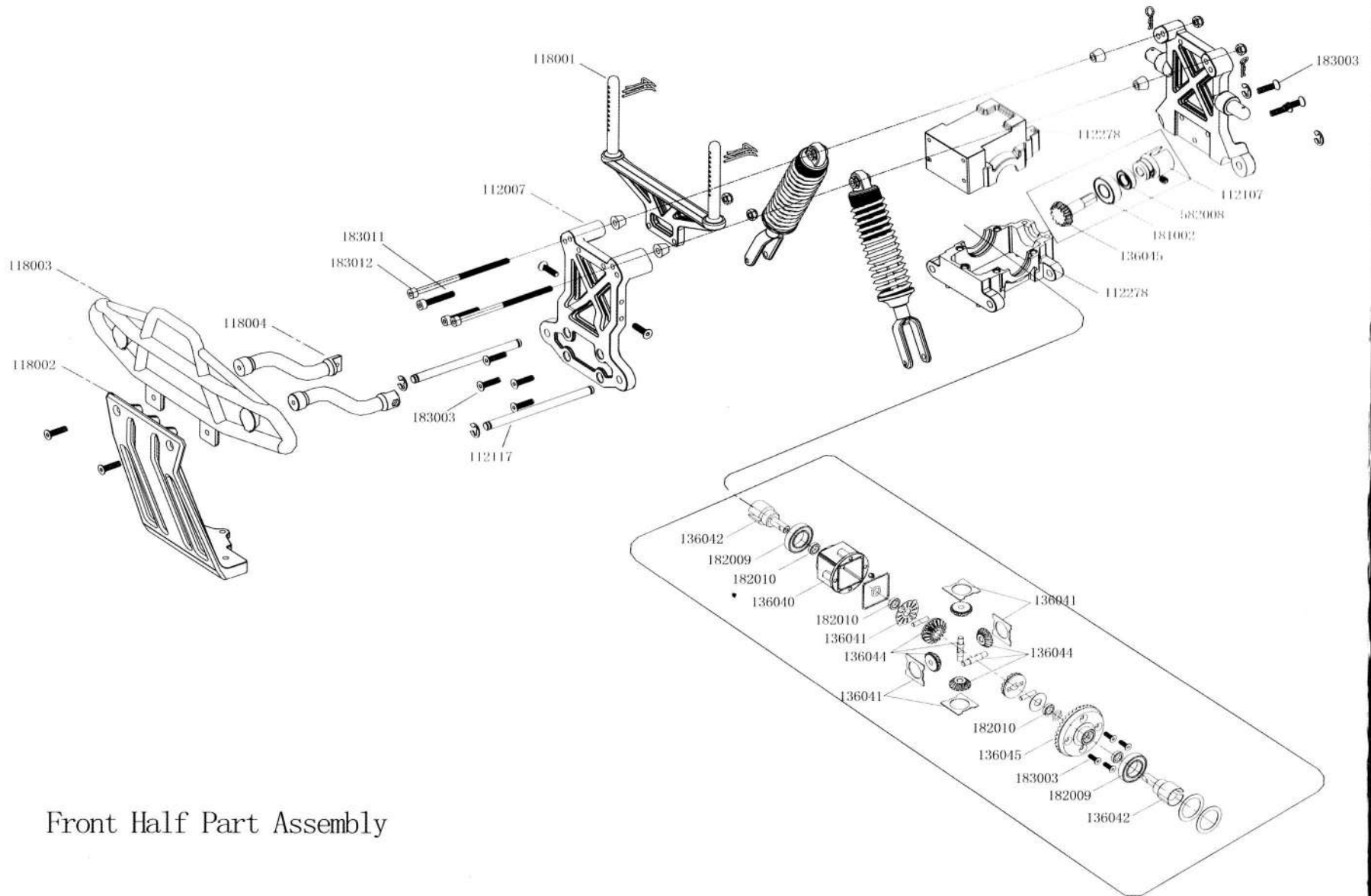


Center Diff Assembly

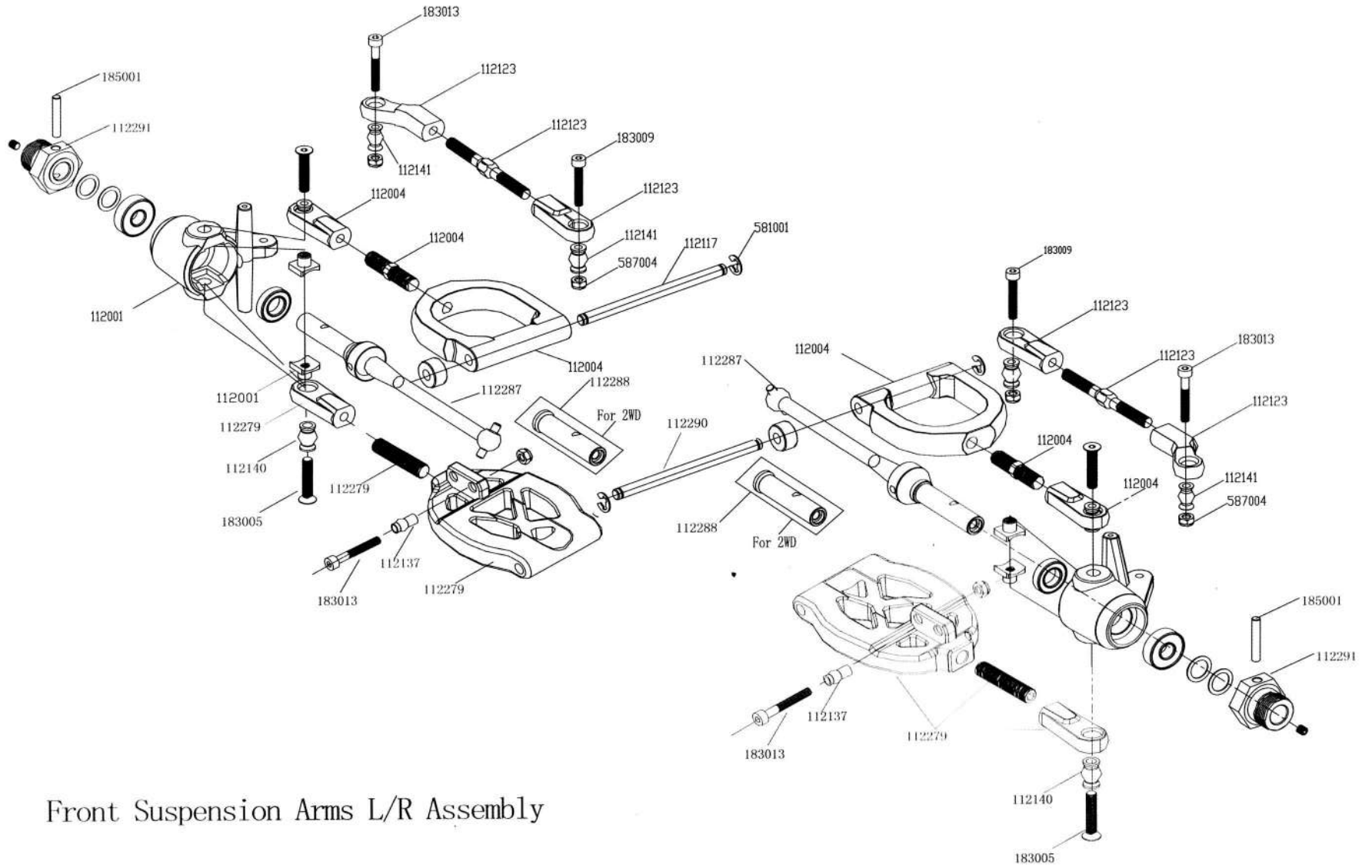
# Radio Tray Assembly



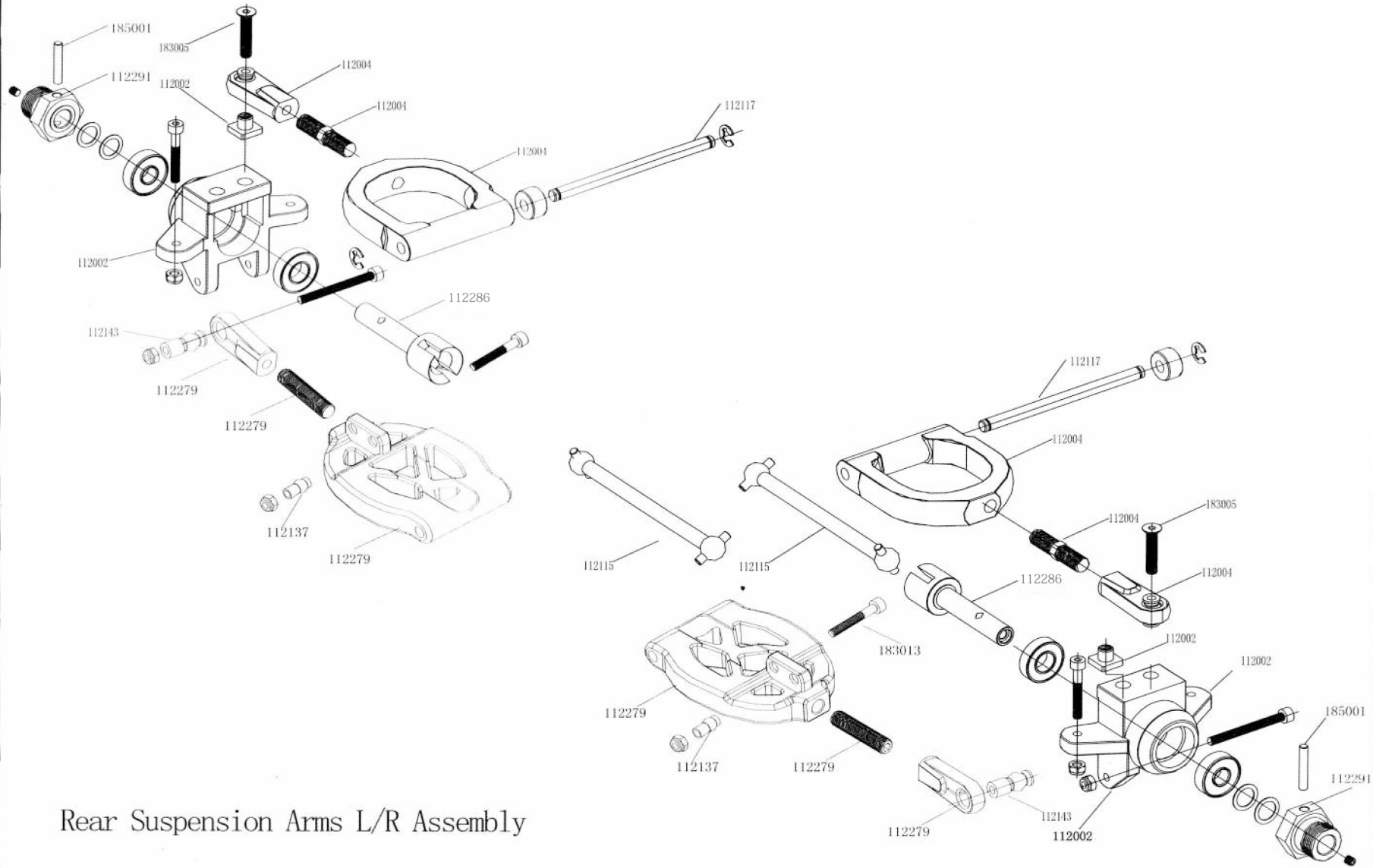
# Servo Saver Assembly



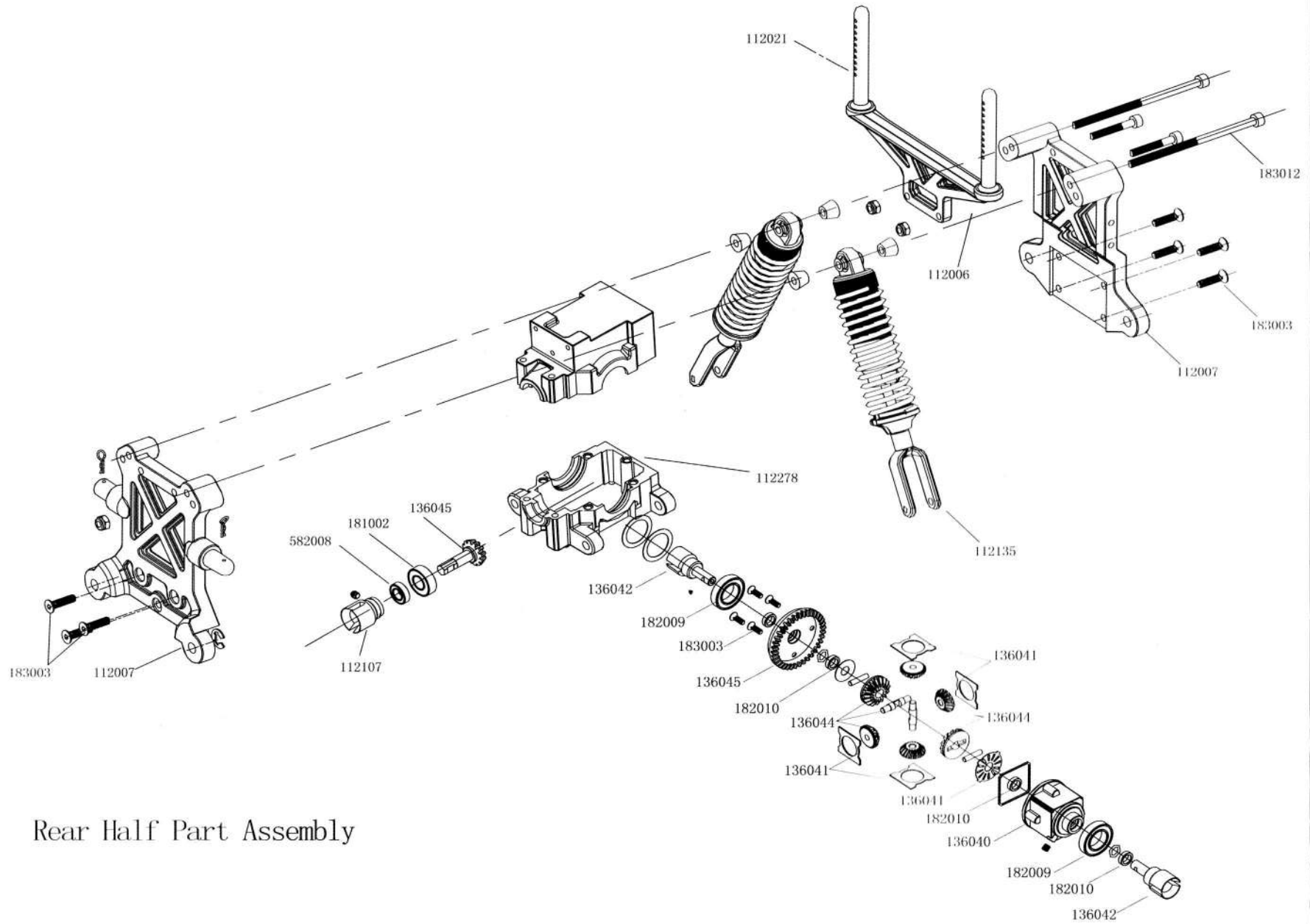
Front Half Part Assembly



Front Suspension Arms L/R Assembly



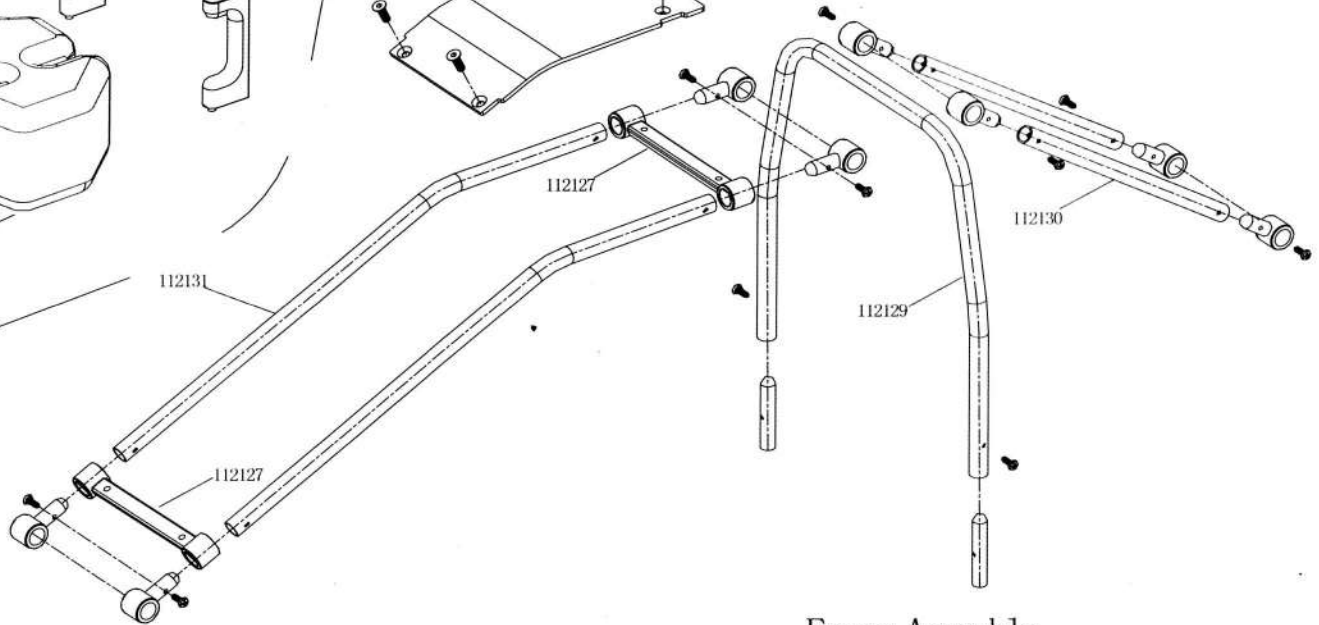
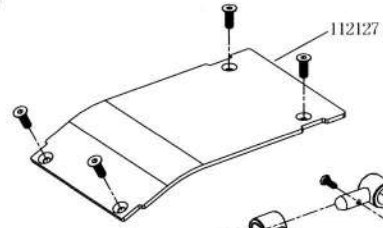
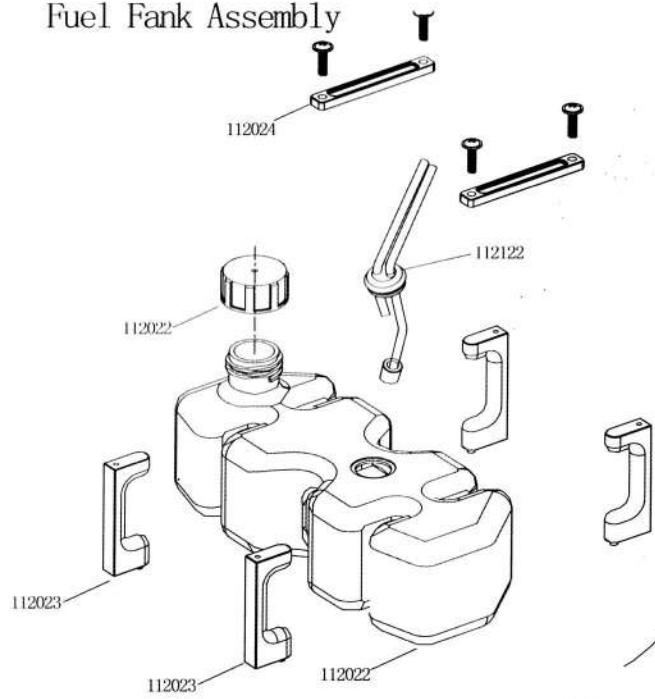
Rear Suspension Arms L/R Assembly



Rear Half Part Assembly



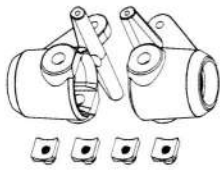
### Fuel Tank Assembly



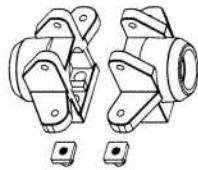
### Frame Assembly



112001 Steering hub set



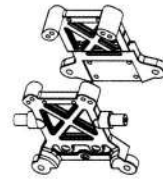
112002 Rear shaft hub set



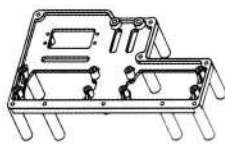
112004 Front upper suspension set



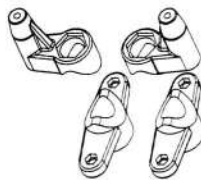
112007 Rear shock tower set



112008 Radio tray set



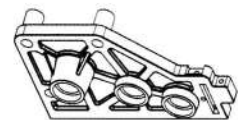
112009 Buffer mount set



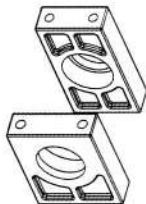
102101 Front upper plate



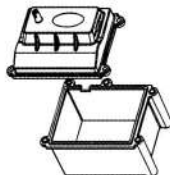
112011 Engine mount set



112014 Mid diff mount set



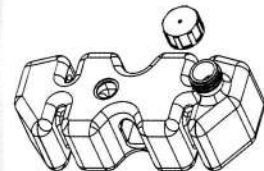
112017 Receiver box set



112018 Gear cover set



112022 Fuel tank set



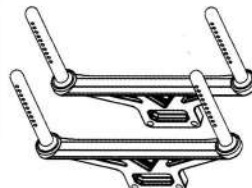
112023 Fuel tank fixed mount



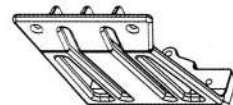
112024 Fuel connecting set



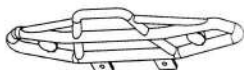
118001 body mount set



118003 Bumper set



118004 Bumper



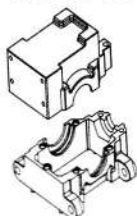
118005 Bumper connector



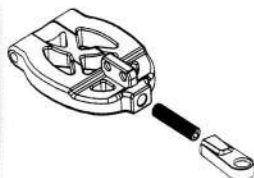
118007 Side guard set



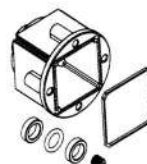
112278 Gear box set



112279 Lower suspension set



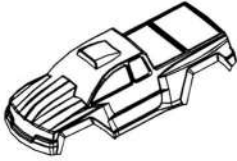
136040 Diff gear box set



112281 Wheel set



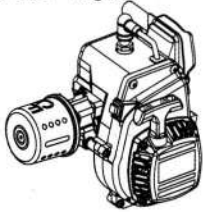
112282 Body shell



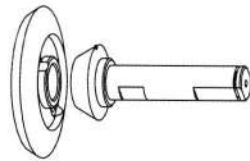
112283 Body decel



102104 Engine



112105 Mid diff gear set



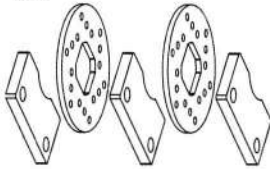
112106 Brake mount set



112107 Connecting cup set



112108 Clutch friction set



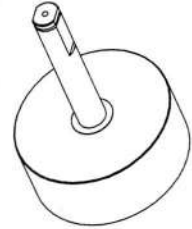
112109 Brake shaft set



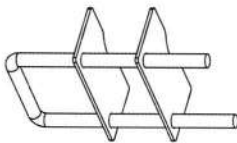
112110 Mid diff mount set



112111 Fly wheel



112112 Brake rod set



112113 Bevel shaft set



112115 Rear shaft set



112116 Central rear shaft



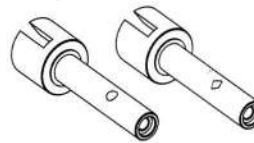
112117 Front upper suspension shaft set



112120 Buffer shaft set



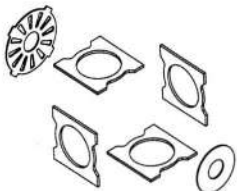
112286 Rear wheel shaft



112287 Front CVD set



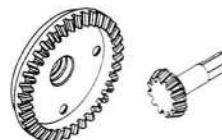
136041 Diff gear set



136044 Diff gear set



136045 Gear set



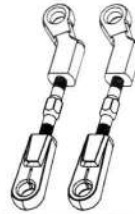
112121 Buffer hex set



112122 fuel tube



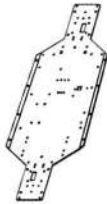
112123 steering connecting rod set



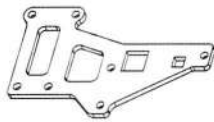
112124 Rear shaft connecting rod set



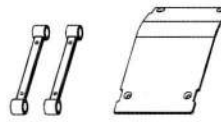
112125 Chasis



112126 Mid diff upper plate



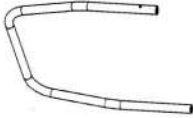
112127 Body upper plate set



112128 Engine mount set



112129 Mid frame set



112130 Rear frame set



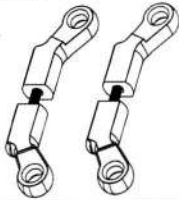
112131 Front frame set



112132 Servo pulling rod set



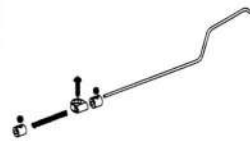
112133 Buffer pulling rod set



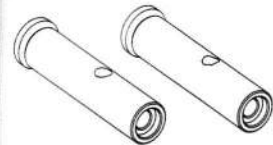
112135 Front shock set



112136 Throttle pulling set



112288 Front axle set (for 2WD)



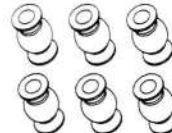
112137 Ball head 6.8\*13 \*6PCS



112138 Ball head 8.8\*13 \*6PCS



112139 Ball head 6.8\*11 \*6PCS



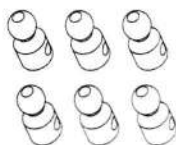
112140 Ball head 9.8\*14 5.1) \*6PCS



112141 Ball head 9.8\*14 4.1) \*6PCS



112142 Ball head 6.8\*14.5 \*6PCS



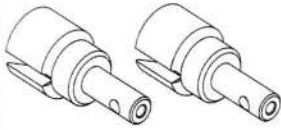
112143 Ball head 9.8\*21 \*6PCS



112144 Ball head 9.8\*25.5 \*6PCS



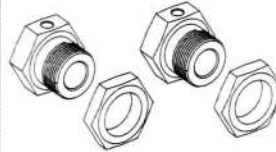
136042 Joint cup



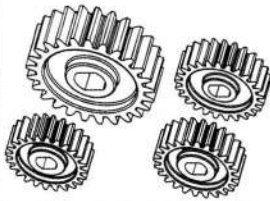
112290 Lower suspension shaft



112291 Wheel adapter



118010 Gear set



511411 Tune pipe (option)



511374 Charger 230V GS



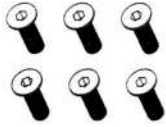
511376 Charger 120V UL



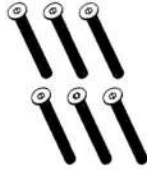
511377 1300MAH NI-MH



183001 Flat hex screw  
M4\*12 \*6PCS



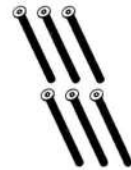
183002 Flat hex screw  
M5\*38 \*6PCS



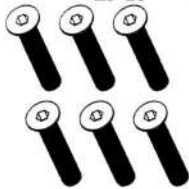
183003 Self-tapping flat  
hex screw 4\*12 \*6PCS



183004 Flat hex screw  
M4\*60 \*6PCS



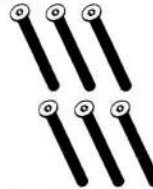
183005 Flat hex screw  
M5\*25 \*6PCS



183006 Self-tapping flat  
hex screw 4\*16 \*6PCS



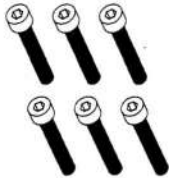
183007 Self-tapping flat  
hex screw 4\*44 \*6PCS



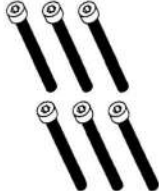
183008 Round cross screw  
M4\*48 \*6PCS



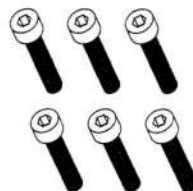
183009 Round hex screw  
M4\*25 \*6PCS



183010 Round hex screw  
M4\*42 \*6PCS



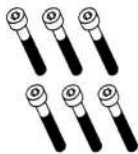
183011 Round hex screw  
M4\*20 \*6PCS



183012 Round hex screw  
M4\*77 \*6PCS



183013 Round hex screw  
M4\*28.5 \*6PCS



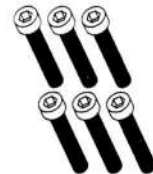
183014 Umbrella cross screw  
M4\*16 \*6PCS



183015 Umbrella self-  
tapping screw 4\*16 \*6PCS



183016 Round hex screw  
M6\*36 \*6PCS



583014 Flat cross screw  
M4\*10 \*6PCS



583015 Umbrella cross screw  
M3\*12 \*6PCS



583023 Round cross screw  
M3\*22 \*6PCS



583036 Round cross screw  
M4\*12 \*6PCS



583042 Round cross screw  
M3\*16 \*6PCS



584001 Set screw M3\*3  
\*6PCS



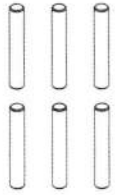
584005 Set screw M5\*5  
\*6PCS



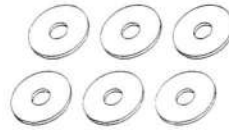
184001 Set screw M6\*6  
\*6PCS



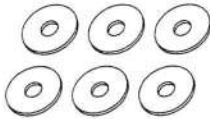
185001 Pin 4\*18  
\*6PCS



186000 Shim 5\*16\*1  
\*6PCS



186003 Shim 10\*14\*0.5  
\*6PCS



587000 Nut M3  
\*6PCS



587002 Nut M5  
\*6PCS



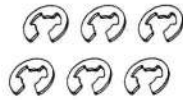
587004 Nut M4  
\*6PCS



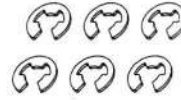
187000 Nut M6  
\*6PCS



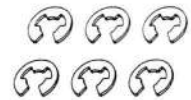
581001 E-clip 5  
\*6PCS



581003 E-clip 3  
\*6PCS



181001 E-clip  
\*6PCS



182001 Bearing 10X26X8  
\*6PCS



181002 Bearing 8X22X7  
\*6PCS



181003 Bearing 10X22X6  
\*6PCS



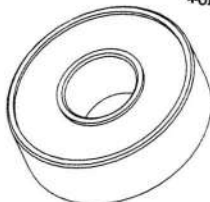
582001 Bearing 10X19X5  
\*6PCS



582008 Bearing 8X16X5  
\*6PCS



182009 Bearing 17X30X7  
\*6PCS



112180 C-clip 8mm  
x6Pcs





## Parts List For FS10803/FS11803 Monster Truck

NO.	Item Name	Quantity	NO.	Item name	Quantity
102101	Front upper plate	1set	112286	Rear wheel shafe	1set
102104	Engine	1set	112287	Front CVD set	1set
112001	Steering hub set	1set	112288	Front axle set (2WD)	1set
112002	Rear shaft hut set	1set	112290	Lower suspension shaft	1set
112004	Front upper suspension set	1set	112291	Wheel adapteri	1set
112007	Rear shock tower set	1set	114143	Ball head 9.8*21	1set
112008	Radio tray set	1set	118001	Body mount set	1set
112009	Buffer mount set	1set	118003	Bumper set	1set
112011	Engine mount set	1set	118004	Bumper	1set
112014	Mid diff mount set	1set	118005	Bumper connector	1set
112017	Receiver box set	1set	118007	Side guard set	1set
112018	Gear cover set	1set	118010	Gear set	1set
112022	Fuel tank set	1set	136040	Diff gear box set	1set
112023	Fuel tank fixed mount	1set	136041	Diff gear set	1set
112024	Fuel connecting set	1set	136042	Joint cup	1set
112105	Mid diff gear set	1set	136044	Diff gear set	1Set
112106	Brake mount set	1set	136045	Gear set	1Set
112107	Connecting cup set	1set	183001	Flat hex screw M4*12	6PCS
112108	Clutch friction set	1set	183002	Flat hex screw M4*38	6PCS
112109	Brake shafe set	1set	183003	Self-tapping flat hex crew 4*12	6PCS
112110	Mid diff mount set	1set	183004	Flat hex screw M4*12	6PCS
112111	Fly wheel	1set	183005	Flat hex screw M5*25	6PCS
112112	Brake rod set	1set	183006	Self-tapping flat hex crew 4*16	6PCS
112113	Bevel shafe set	1set	183007	self-tapping flat hex screw 4*44	6PCS
112114	Wheels combined set	1set	183008	Round cross screw M4*48	6PCS
112115	Rear shafe set	1set	183009	Round hex screw M4*25	6PCS
112116	Central rear shafe	1set	183010	Round hex screw M4*42	6PCS
112117	Front upper suspension shafe set	1set	183011	Round hex screw M4*20	6PCS
112120	Buffer shafe set	1set	183012	Round hex screw M4*80	6PCS
112121	Buffer hex set	1set	183013	Round hex screw M4*28.5	6PCS
112122	Fuel tube	1set	183014	Umbrella cross screw M4*16	6PCS
112123	Steering connecting rod set	1set	183015	umbrella selftapping screw4*16	6PCS
112124	Rear shaft connecting rod set	1set	183016	Round hex screw M6*36	6PCS
112125	Chasis	1set	583014	Umbrella cross screw M4*10	6PCS
112126	Mid diff upper plate	1set	583015	Umbrella cross screw M3*12	6PCS
112127	Body upper plate set	1set	583023	Round cross screw M3*22	6PCS
112128	Engine mount set	1set	583036	Round cross screw M4*12	6PCS
112129	Mid frame set	1set	583042	Round cross screw M3*16	6PCS
112130	Rear frame set	1set	584001	Set screw M3*3	6PCS
112131	Front frame set	1set	584005	Set screw M5*5	6PCS
112132	Servo pulling rod set	1set	184001	Set screw M6*6	6PCS
112133	Buffer pulling rod set	1set	185001	Pin4*18	6PCS
112135	Front shock set	1set	186000	shim $\phi$ 5*16*1	6PCS
112136	Throttle pulling set	1set	186003	shim $\phi$ 10*14*0.5	6PCS
112137	Ball head 6.8*13	6PCS	587000	Nut M3	6PCS
112138	Ball head 8.8*13	6PCS	587002	Nut M5	6PCS
112139	Ball head 6.8*11	6PCS	587004	Nut M4	6PCS
112140	Ball head 9.8*14 5.1)	6PCS	187000	Nut M6	6PCS
112141	Ball head 9.8*14 4.1)	6PCS	581001	E-clip $\phi$ 5	6PCS
112142	Ball head 9.8*14.5	6PCS	581003	E-clip $\phi$ 3	6PCS
112144	Ball head 9.8*25.5	6PCS	181001	E-clip $\phi$ 8	6PCS
112281	Wheel set	1set	182002	Bearing 10*26*8	6PCS
112278	Gear box set	1set	181002	Bearing 8*22*7	6PCS
112279	Lower suspension set	1set	181003	Bearing 10*22*6	6PCS
112282	Body shell	1set	582001	Bearing 10*19*5	6PCS
112283	Body decel	1set	582008	Bearing 8*16*5	6PCS