

# IRON MAN S



1:5 SCALE 2WD/4WD GASOLINE BUGGY

Item NO. : FS10203/FS11203



## SPECIFICATION:

Length.....	840mm
Width.....	430mm
Height.....	300mm
Wheelbase (F/R).....	520mm
Tire Diameter.....	170*W78mm
Gear Ratio.....	7.68:1
Engine.....	23cc/26cc/30cc
Fuel capacity.....	700CC
N. W/G. W.....	10.7 Kg/15.2 Kg

[WWW.FS-RACINGART.COM](http://WWW.FS-RACINGART.COM)



10. Fuel is highly flammable and explosive!

Never use fuel indoors or in places with open fire or heat sources. Keep out of children's reach! Shut the cap tightly! Do not dispose of empty fuel cans into a fire! There is danger of explosion.

11. Be careful handling fuel, in case of contact with eyes or skins, rinse immediately with water and seek medical help if necessary. Do not swallow fuel.

## TROUBLE SHOOTING

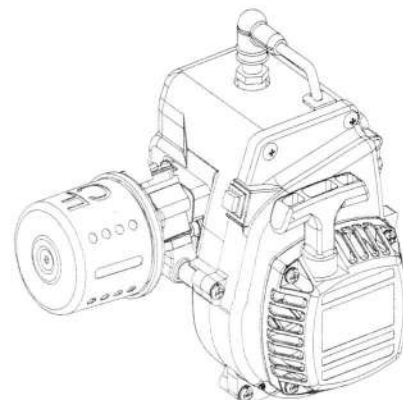
Problems	Reasons	Solution
Engine does not start	1 No fuel in the fuel tank or in the carb. 2 The glow plug damaged or not charged 3 The fuel pipe the air filter, or the tuned pipe are clogged 4 The engine is flooded 5 The carburetor is not adjusted properly 6 The servo linkage is not adjusted properly	1 Fill the fuel tank and press the prime button 2 Replace the glow plug and /or charge the glow plug 3 Clear or release the clogged parts 4 Remove the glow plug, discharge fuel, test the glow plug. If broken, replace. 5 Set idle and main/slow needle into the standard starting position 6 Move the servo to neutral position and readjust it
Engine can start but then stalls	1 No fuel in the fuel tank 2 The fuel pipe, the air filter, or the tuned pipe are clogged 3 The carburetor is not adjusted properly 4 The engine is overheated	1 Fill fuel tank and prime engine 2 Clean or replace the clogged parts 3 Readjust the idle and main/slow needle to the standard starting position 4 Let the engine cool down thoroughly, and then restart
The car does not run well	1 The carburetor is not adjusted properly 2 Oil pressure in the tuned pipe is low 3 Check the transmission system	1 Readjust the idle and main/slow needle adjusting screw 2 The pipe between the tuned pipe and the fuel tank 3 If broken ,replace
Out of control	1 The transmitter or the receiver is power off 2 Bad signal reception 3 The servo's link is not adjusted properly	1 Recharge or replace the batteries 2 Extend the antenna of transmitter and the receiver to its full extent 3 Move the servo to neutral position and readjust it

## Start engine

Before starting engine please read the instruction carefully

### 1. Engine friction practice

- The engine friction practice, to be basic, it should burn and practice 1 to 2 cylinder fuel, then walk slow and burn 1 to 2 cylinder fuel, at the moment it could be work normal and performance good.
- Attention : Because the buggy is effected easily in external environment, after buggy working over 1-2hour, the air filter should be cleaned. This work should be always remembered to do, otherwise it may affect the engine performance and engine life.



### 2. Start the transmitter and the receiver

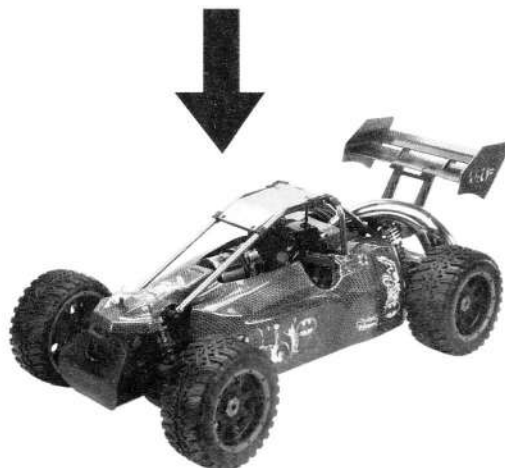
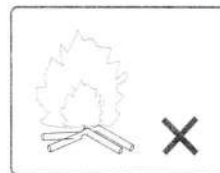
- 2.1 Pull the transmitter and receiver' s antenna, then turn on the transmitter and the receiver' s switch
- 2.2 Open the receiver' s switch, Be sure the carburetor is in idle position

### 3. Fill in fuel method

- 3.1 Use R C model special fuel. Mix together Gasoline and highly lubricating oil (2T oil), the proportion is 25:1.
- 3.2 Finish filling fuel, tightly the fuel tank cover.

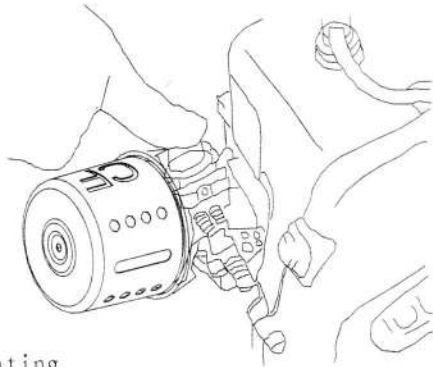
#### ● Attention

1. Don' t use the spirit of fuel or to contain burning aids ethyl alcohol, otherwise, carburetor rubber part and the engine can be damaged.
2. Gasoline is extremely flammable, strictly prohibit the smoke and fire.
- 3.3 For fear the fuel system appears unusually, be sure to keep the fuel strainer, fuel pipe and the appendix normal used.



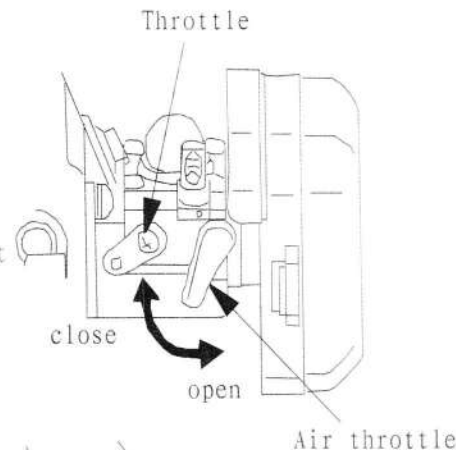
#### 4. Start Engine

- 4.1 Impetus front Valve several times until safely flow out oil.  
(Fig. 1)
- 4.2 Close the air throttle (Fig. 2), the open position and accelerator keep a 1/4-1/3 distance.
- 4.3 Rapidly pull the start handle, until the engine start work and sounds noisy. (Fig. 3)
- 4.4 Close the air throttle to 1/4 distance of opening position
- 4.5 Rapidly pull the start handle
- 4.6 After starting the engine several minutes preheating



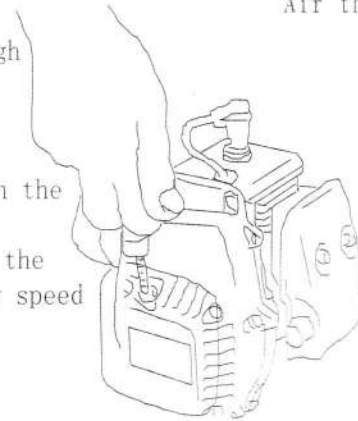
#### Main point:

1. When engine is over hot, blocked and lack of air is inevitable.
2. Block excessively, resulting to start difficultly. Then Causes the igniter plug to be moist.
3. When replace the igniter plug or dry the igniter plug, usually pull the start handle, remove the rest oil in the cylinder.



#### 5. Concrete operation

- 5.1 The engine has adjusted to high power and the high velocity condition, Needs correct maintenance to keep high performance.
- 5.2 The concrete operation is different because of the different player. It would be mentioned in the automobile manufacturer operating instructions.
- 5.3 After the valve full speed revolution, must let the engine be cold. Actually more than 30 seconds low speed idle operation.

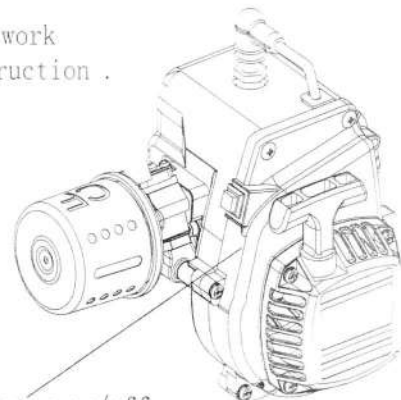


#### 6. Stop Engine

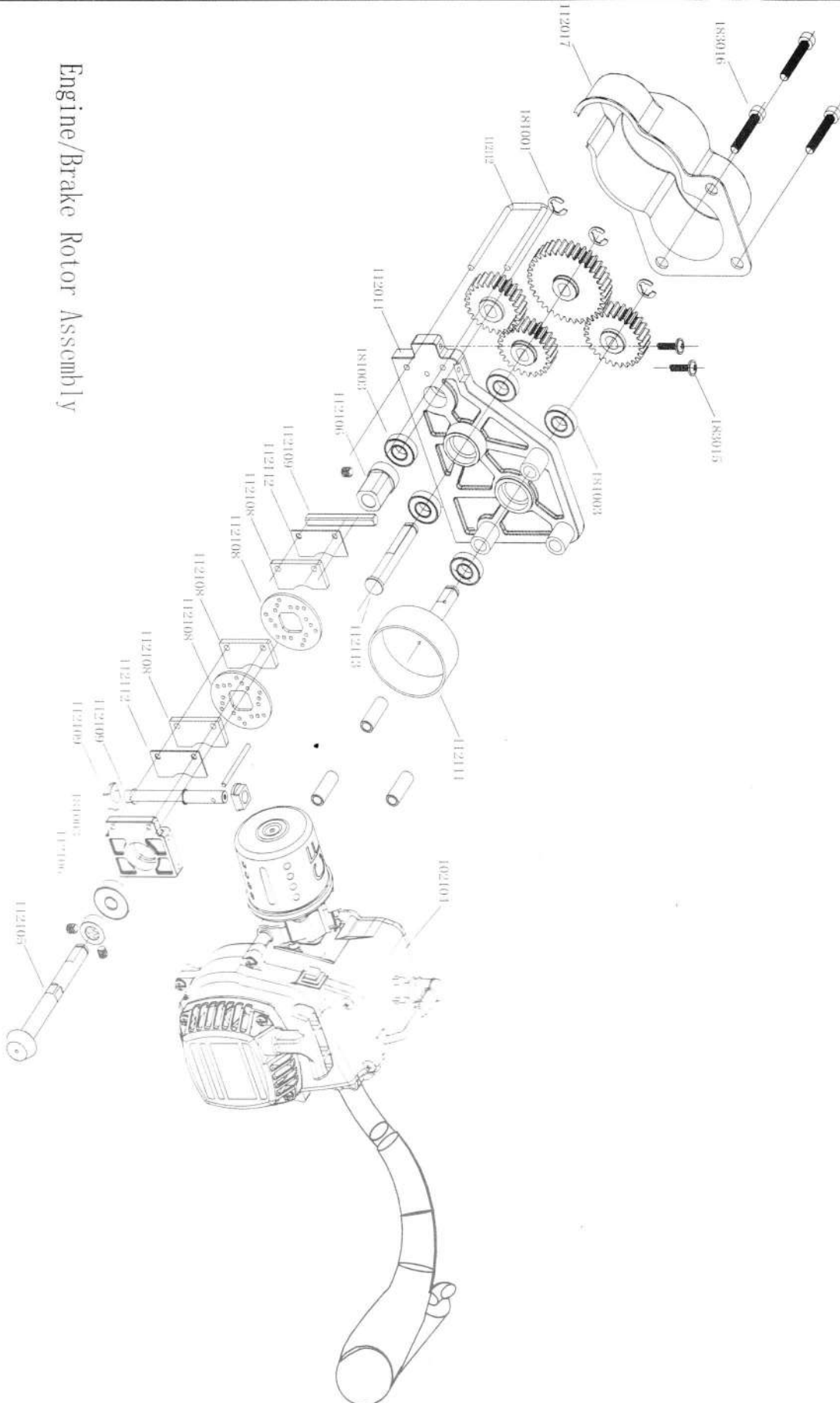
- Press down the engine flameout switch, engine stop work immediately. Detail please refer to the user's instruction.

#### 7. Attention maintenance

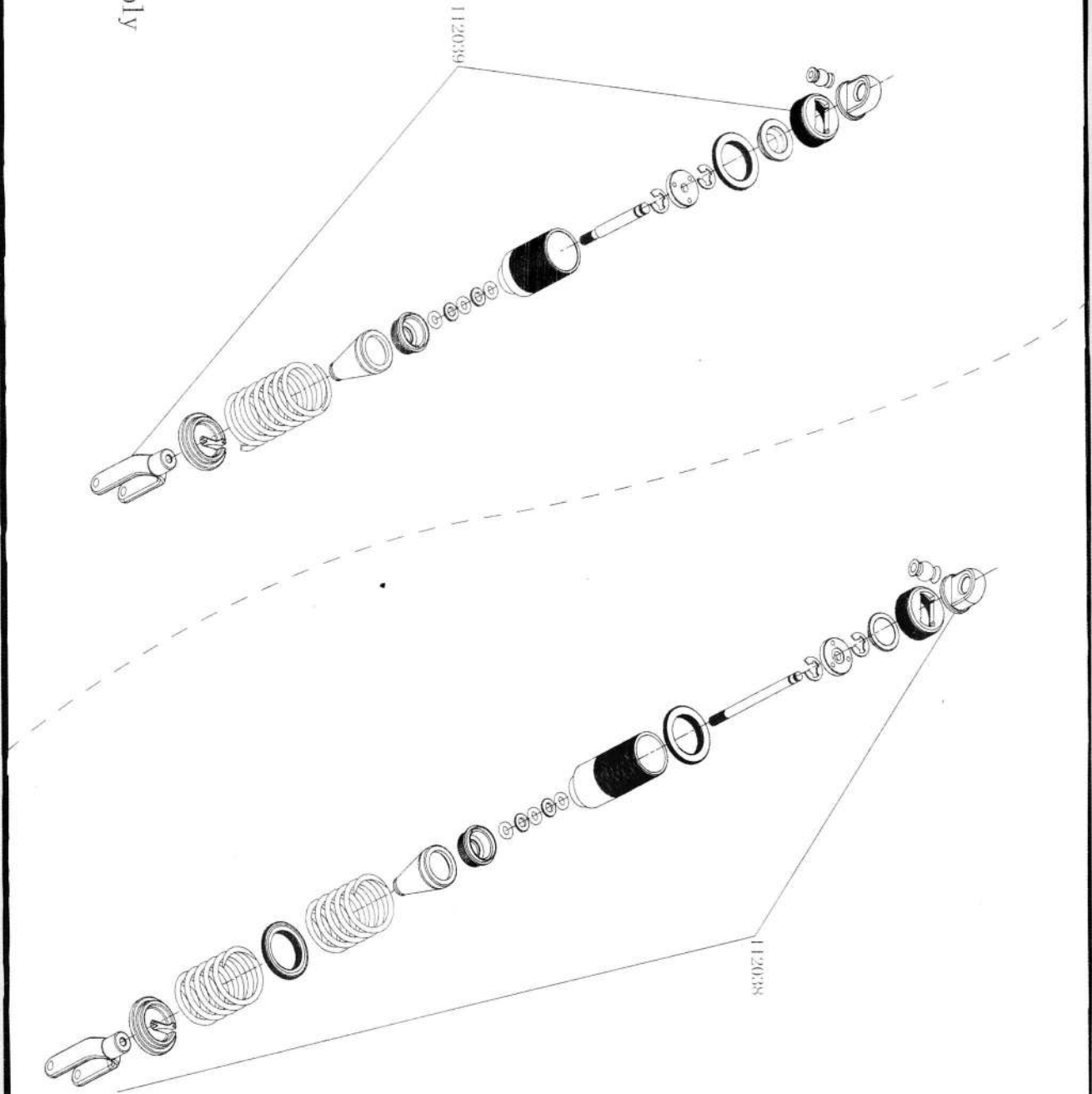
Keep the engine clean. Detail please refer to Instruction

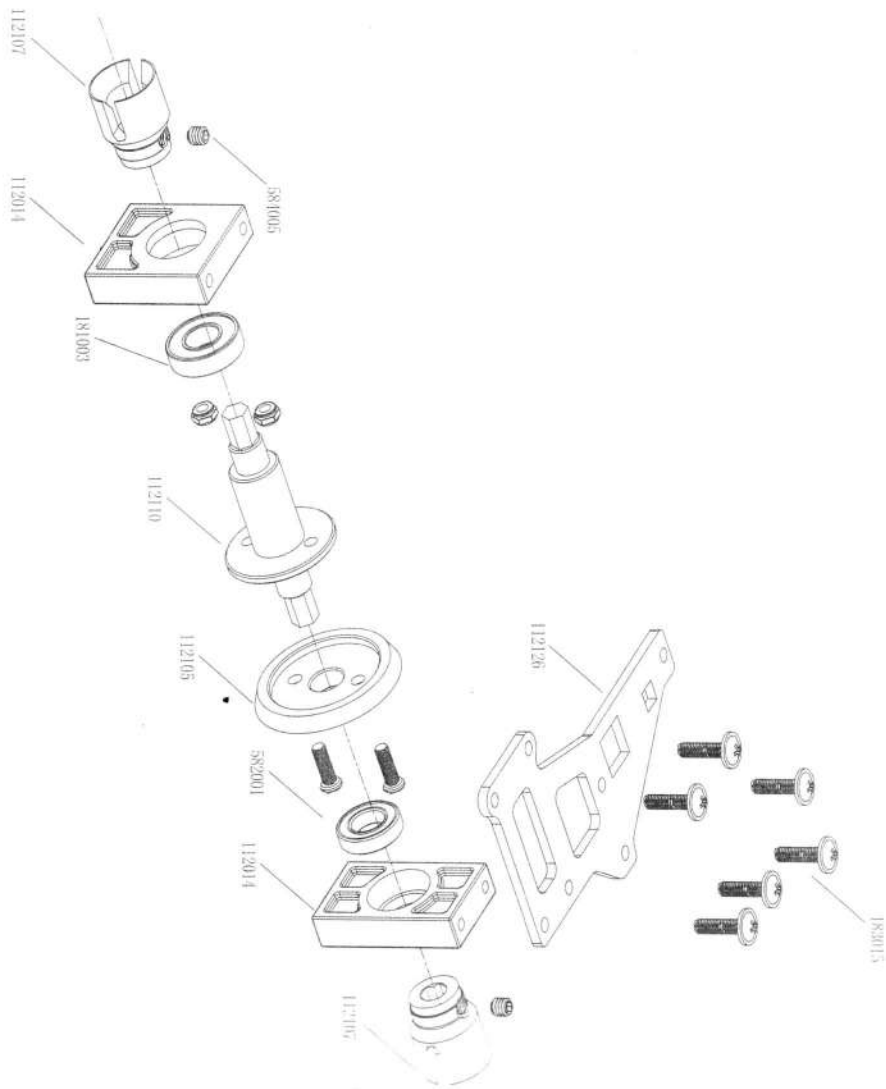


Engine/Brake Rotor Assembly



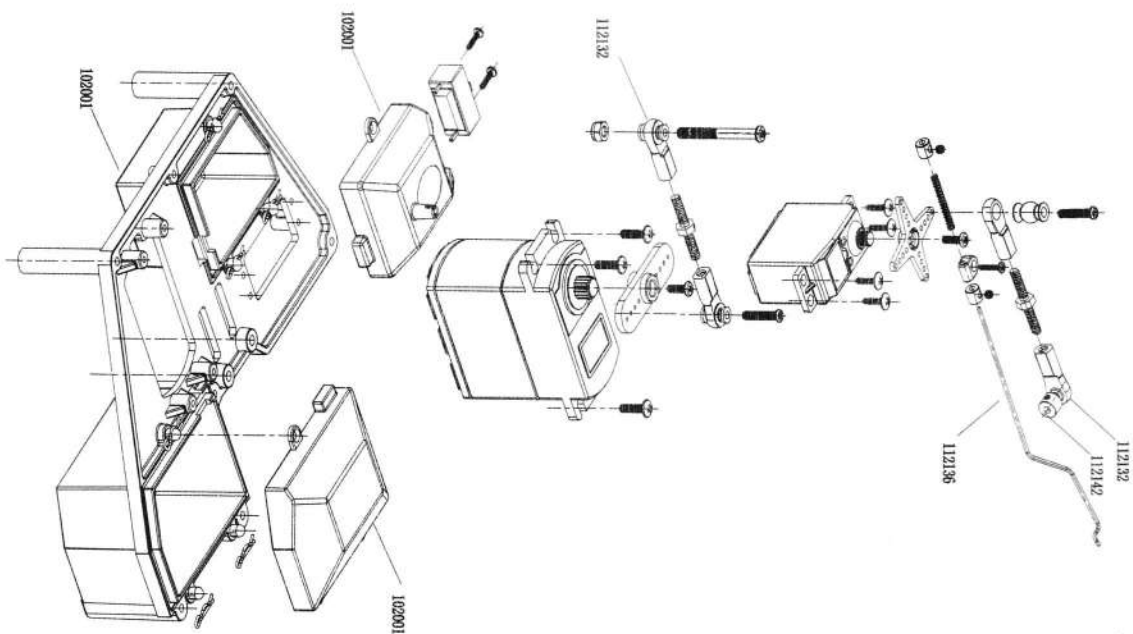
Shock Assembly



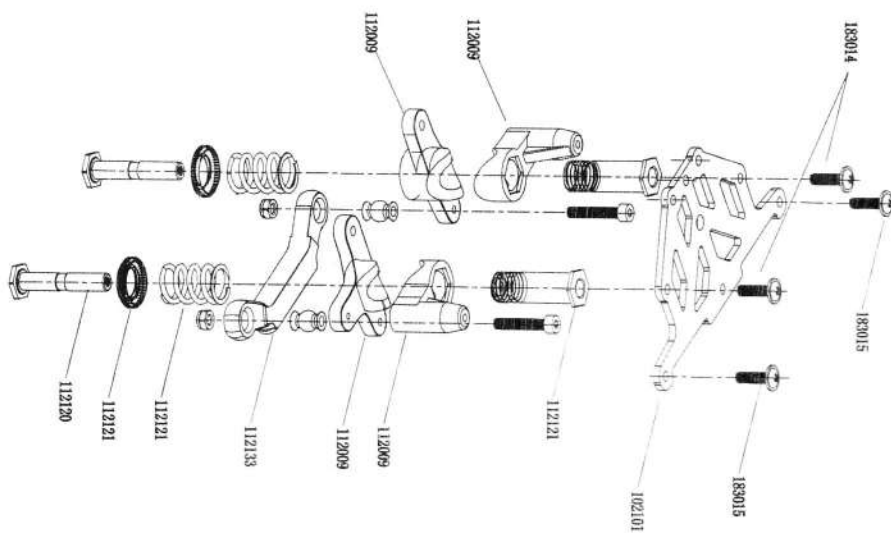


Center Diff Assembly

# Radio Tray Assembly



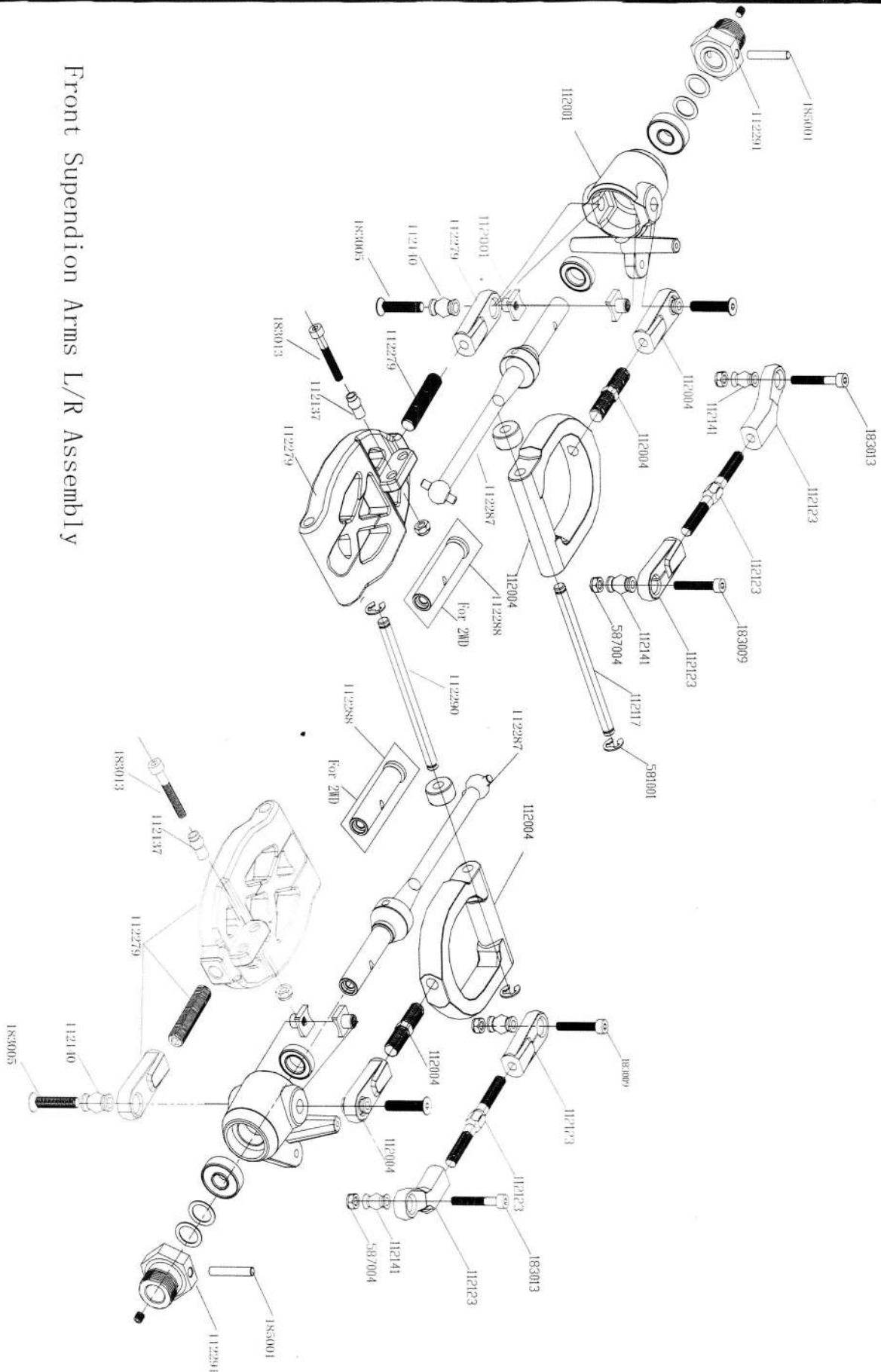
# Servo Saver Assembly







Front Suspension Arms L/R Assembly

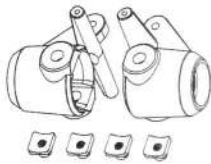




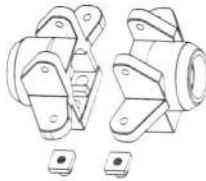




112001 Steering hub set



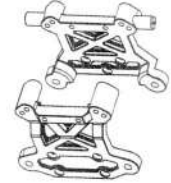
112002 Rear shaft hub set



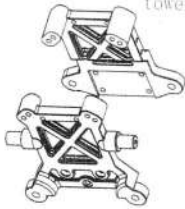
112004 Front upper suspension arm set



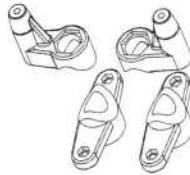
112006 Front shock tower



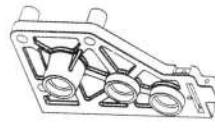
112007 Rear shock tower



112009 Buffer mount set



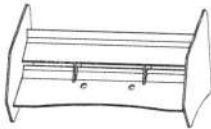
112011 Engine mount set



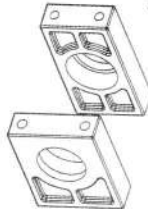
112012 Bumper set



112013 White Wing



112014 Mid-diff mount set



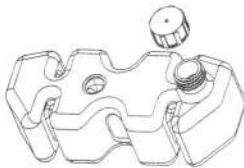
112018 Gear cover



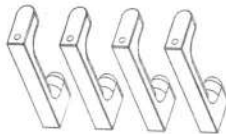
112020 Wing bracket set



112022 Fuel tank set



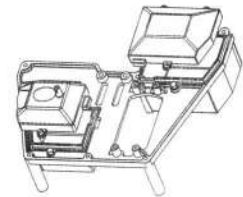
112023 Fuel tank mount set



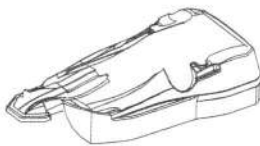
112024 Fuel connecting set



102001 Radio tray set



102107 Body



102108 Body decal



102110 Body



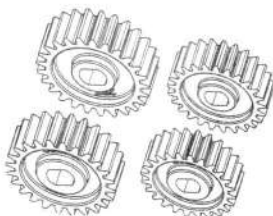
102111 Black Wing



102109 Tyre set



102801 Metal gear set



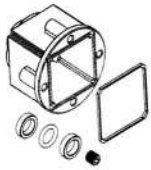
112180 C-clip set  
x6Pcs



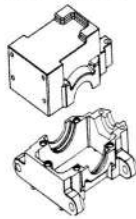
# Part List For FS10203/FS11203 Buggy



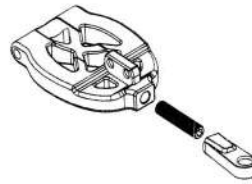
136040 Diff gear box set



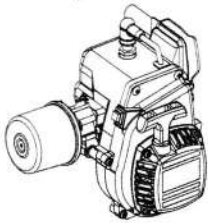
112278 Gear box set



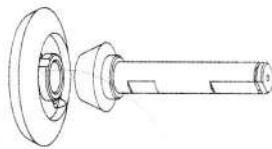
112279 Lower suspension set



102104 Engine



112105 Central gear set



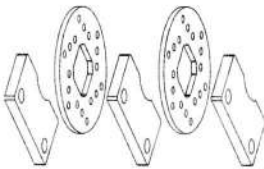
112106 Brake mount set



112107 Connecting cup set



112108 Clutch friction set



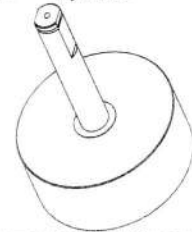
112109 Brake shaft set



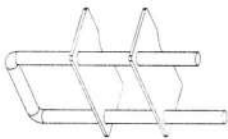
112110 Mid-diff gear mount set



112111 Flywheel



112112 Brake rod set



112113 Bevel gear shaft set



112115 Central front shaft set



112116 Central rear shaft set



112120 Buffer shaft set



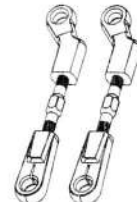
112121 Buffer hex set



112122 Fuel tube



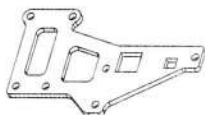
112123 Steering connecting rod set



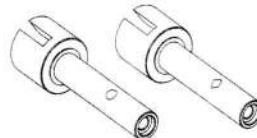
112124 Rear shaft hub connecting rod set



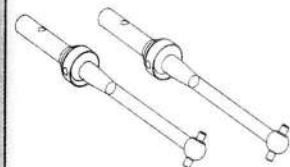
112126 Mid-diff upper supporting plate



112286 Rear wheel shaft



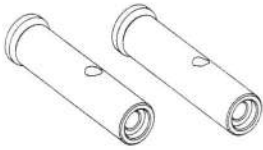
112287 Front CVD set





# Part List For FS-10203/FS11203 Buggy

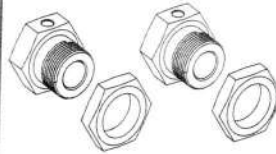
112288 Front axle set  
(for 2WD)



112290 Lower suspension  
shaft



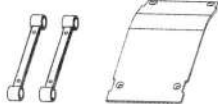
112291 Wheel adapter



136042 Joint cup



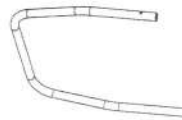
112127 Body upper support-  
ing plate



112128 Engine mount



112129 Mid frame set



112130 Rear frame set



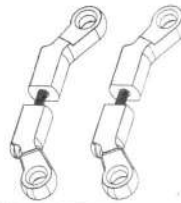
112131 Front frame set



112132 Servo pulling rod  
set



112133 Buffer pulling rod  
set



112039 Front shock set



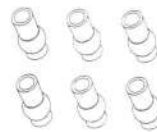
112038 Rear shock set



112136 Pulling rod



112137 Ball head 6.8\*13  
\*6PCS



112138 Ball head 8.8\*13  
\*6PCS



112139 Ball head 6.8\*11  
\*6PCS



112140 Ball head 9.8\*14  
(Φ 5.1) \*6PCS



112141 Ball head 9.8\*14  
(Φ 4.1) \*6PCS



112142 Ball head 6.8\*14.5  
\*6PCS



112143 Ball head 9.8\*21  
\*6PCS



112144 Ball head 9.8\*25.5  
\*6PCS



102101 Front upper plate



102102 Chassis

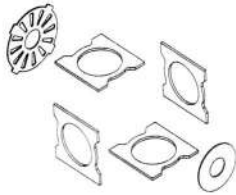




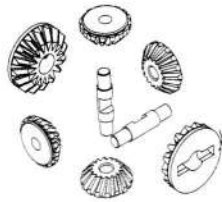
# Part List For FS10203/FS11203 Buggy



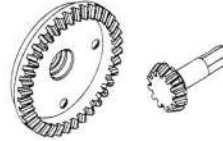
136041 Diff gear set



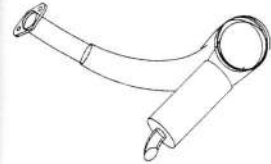
136044 Diff gear set



136045 Gear set



111102 Tune pipe (option)



183001 Flat hex screw  
M4\*12 \*6PCS



183002 Flat hex screw  
M5\*38 \*6PCS



183003 self-tapping flat  
hex screw 4\*12 \*6PCS



183004 Flat hex screw  
M4\*60 \*6PCS



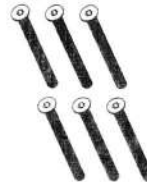
183005 Flat hex screw  
M5\*25 \*6PCS



183006 Self-tapping flat  
hex screw 4\*16 \*6PCS



183007 Self-tapping flat  
hex screw 4\*44 \*6PCS



183008 Round cross screw  
M4\*48 \*6PCS



183009 Round hex screw  
M4\*25 \*6PCS



183010 Round hex screw  
M4\*42 \*6PCS



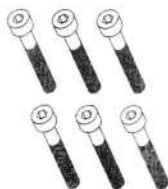
183011 Round hex screw  
M4\*20 \*6PCS



183012 Round hex screw  
M4\*77 \*6PCS



183013 Round hex screw  
M4\*28.5 \*6PCS



183014 Umbrella cross screw  
M4\*16 \*6PCS



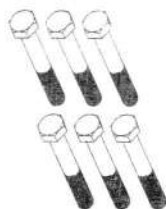
183015 Umbrella self-  
tapping screw 4\*16 \*6PCS



183016 Round hex screw  
M6\*36 \*6PCS



183017 Hex screw  
M8\*55 \*6PCS



583014 Flat screw  
M4\*10 \*6PCS



583015 Umbrella cross screw  
M3\*12 \*6PCS



583023 Round cross screw  
M3\*22 \*6PCS





# Part List For FS10203/FS11203 Buggy

583036 Round cross screw  
M4\*12 \*6PCS



583042 Round cross screw  
M3\*16 \*6PCS



584001 Set screw M3\*3  
\*6PCS



584005 Set screw M5\*5  
\*6PCS



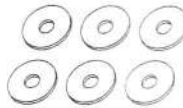
184001 Set screw M6\*6  
\*6PCS



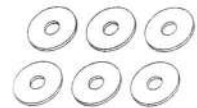
185000 Pin 1\*31  
\*6PCS



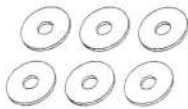
186000 Shim 6\*1  
\*6PCS



186001 Shim 10\*1  
\*6PCS



186002 Shim 2\*1  
\*6PCS



587000 Nut M3  
\*6PCS



587002 Nut M5  
\*6PCS



587004 Nut M4  
\*6PCS



187000 Nut M6  
\*6PCS



581001 E-clip  
\*6PCS



581003 E-clip  
\*6PCS



181001 E-clip  
\*6PCS



182001 Bearing 10X26X8



181002 Bearing 8X22X7



181003 Bearing 10X22X6



582001 Bearing 10X19X5



582008 Bearing 8X16X5



511374 Charger 230V 6S



511375 Charger 12V 1L



511377 1300MAH NI-MH





## Parts List For FS-10203/FS-11203 Buggy

NO.	Item Name	Quantity	NO.	Item name	Quantity
102001	Radio tray set	1set	112143	Ball head 9.8*21	6pcs
102101	Front upper plate	1set	112144	Ball head 9.8*25.5	6pcs
102102	Chassis	1set	112278	Gear box set	1set
102104	Engine	1set	112279	Lower suspension set	1set
102107	Body	1set	112286	Rear wheel shaft	1set
102108	Body decal	1set	112287	Front CVD set	1set
102109	Tyre set	1set	112288	Front axle set (for 2WD)	1set
102801	Metal gear set	1set	112290	Lower suspension shaft	1set
112001	Steering hub set	1set	112291	Wheel adapter	1set
112002	Rear shaft hub set	1set	136040	Diff gear box set	1set
112004	Front upper suspension set	1set	136041	Diff gear set	1set
112006	Front shock tower	1set	136042	Joint cup	1set
112007	Rear shock tower	1set	136044	Diff gear set	1set
112009	Buffer mount set	1set	136045	Gear set	1set
112011	Engine mount set	1set	111102	Tune pipe(option)	1set
112012	Bumper set	1set	183001	Flat hex screw M4*12	6PCS
112013	Wing	1set	183002	Flat hex screw M5*38	6PCS
112014	Mid-diff mount set	1set	183003	Self-tapping flat hex screw 4*12	6PCS
112018	Gear cover	1set	183004	Flat hex screw M4*60	6PCS
112020	Wing bracket	1set	183005	Flat hex screw M5*25	6PCS
112022	Fuel tank set	1set	183006	Self-tapping flat hex screw 4*16	6PCS
112023	Fuel connecting set	1set	183007	Self-tapping flat hex screw 4*44	6PCS
112024	Fuel connecting set	1set	183008	Round cross screw M4*48	6PCS
112039	Front shock set	1set	183009	Round hex screw M4*25	6PCS
112037	Rear shock set	1set	183010	Round hex screw M4*42	6PCS
112105	Central gear set	1set	183011	Round hex screw M4*20	6PCS
112106	Brake mount set	1set	183012	Round hex screw M4*80	6PCS
112107	Connecting cup set	1set	183013	Round hex screw M4*28.5	6PCS
112108	Clutch friction set	1set	183014	Umbrella cross screw M4*16	6PCS
112109	Brake shaft set	1set	183015	Umbrella selftapping screw4*16	6PCS
112110	Mid-diff gear mount	1set	183016	Round hex screw M6*36	6PCS
112111	Flywheel set	1set	183017	Hex cross screw M8*55	6PCS
112112	Brake rod set	1set	583014	Umbrella cross screw M4*10	6PCS
112113	Bevel gear shaft	1set	583015	Umbrella cross screw M3*12	6PCS
112115	Central front set	1set	583023	Round cross screw M3*22	6PCS
112116	Central rear shaft set	1set	583036	Round cross screw M4*12	6PCS
112120	Buffer shaft set	1set	583042	Round cross screw M3*16	6PCS
112121	Buffer hex set	1set	584001	Set screw M3*3	6PCS
112122	Fuel tube	1set	584005	Set screw M5*5	6PCS
112123	Steering connecting	1set	184001	Set screw M6*6	6PCS
112124	Rear shaft hub connecting rod set	1set	185000	Pin $\phi$ 3*31	6PCS
112126	Mid-diff upper supporting plate	1set	186000	shim $\phi$ 5*16*1	6PCS
112127	Body upper supporting plate	1set	186001	shim $\phi$ 4*10*1	6PCS
112128	Engine mount	1set	186002	shim $\phi$ 6*12*1	6PCS
112129	Mid frame set	1set	587000	Nut M3	6PCS
112130	Rear frame set	1set	587002	Nut M5	6PCS
112131	Front frame set	1set	587004	Nut M4	6PCS
112132	Servo pulling rod set	1set	187000	Nut M6	6PCS
112133	Buffer pulling rod set	1set	581001	E-clip $\phi$ 5	6PCS
112136	Pulling rod	1set	581003	E-clip $\phi$ 3	6PCS
112137	Ball head 6.8*13 *6PCS	6pcs	181001	E-clip $\phi$ 8	6PCS
112138	Ball head 8.8*13 *6PCS	6pcs	182002	Bearing 10*26*8	6PCS
112139	Ball head 6.8*11 *6PCS	6pcs	181002	Bearing 8*22*7	6PCS
112140	Ball head 9.8*14 ( $\phi$ 5.1) *6PCS	6pcs	181003	Bearing 10*22*6	6PCS
112141	Ball head 9.8*14 ( $\phi$ 4.1) *6PCS	6pcs	582001	Bearing 10*19*5	6PCS
112142	Ball head 6.8*14.5 *6PCS	6pcs	582008	Bearing 8*16*5	6PCS